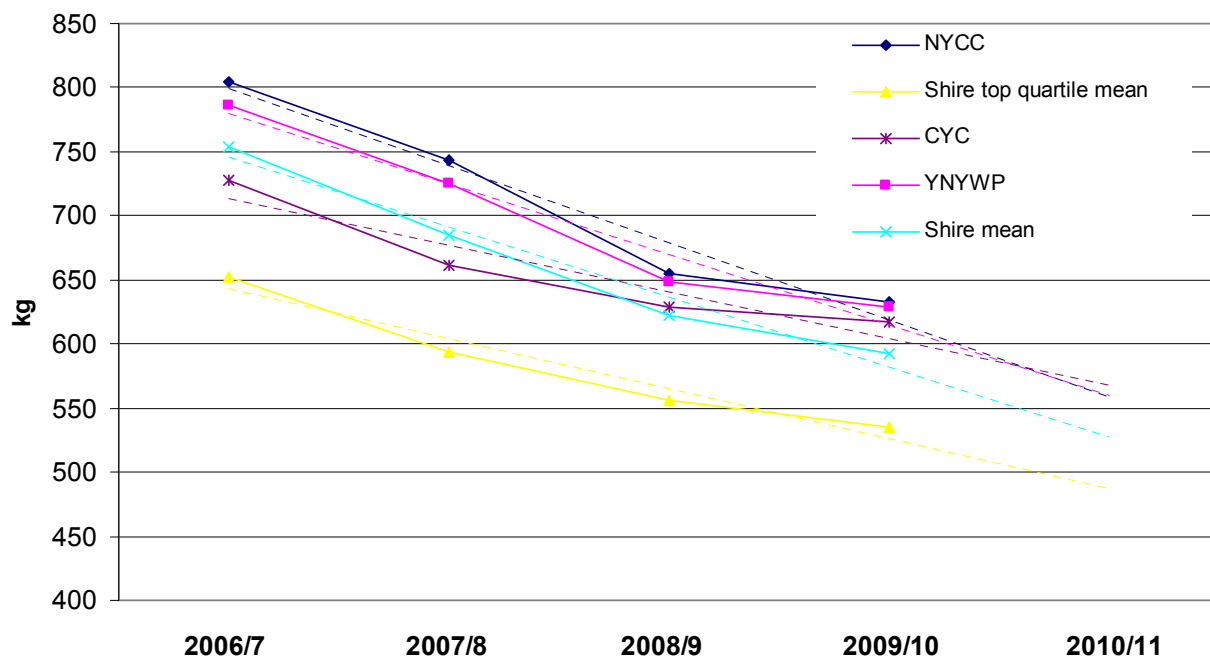


Summary of waste performance

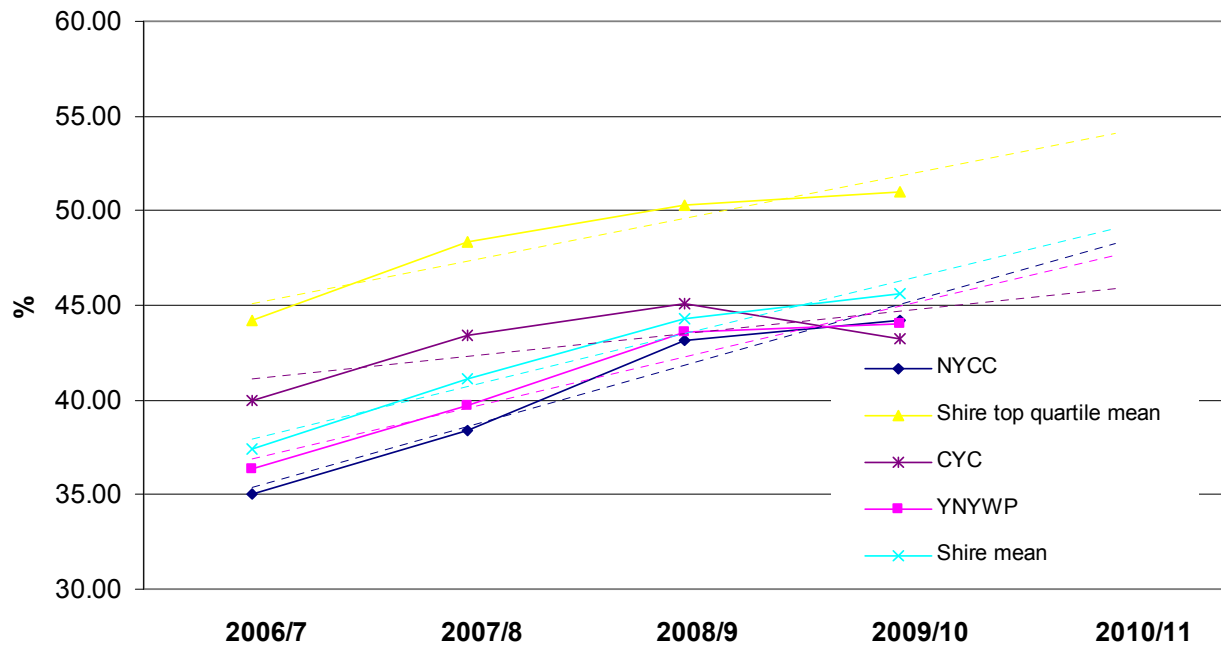
Graphs and tables showing the performance against National Indicators (NI):

- NI191 – Residual household waste per household (kg/household)
- NI192 – Percentage of household waste sent for reuse, recycling and composting
- NI193 – Percentage of municipal waste sent to landfill

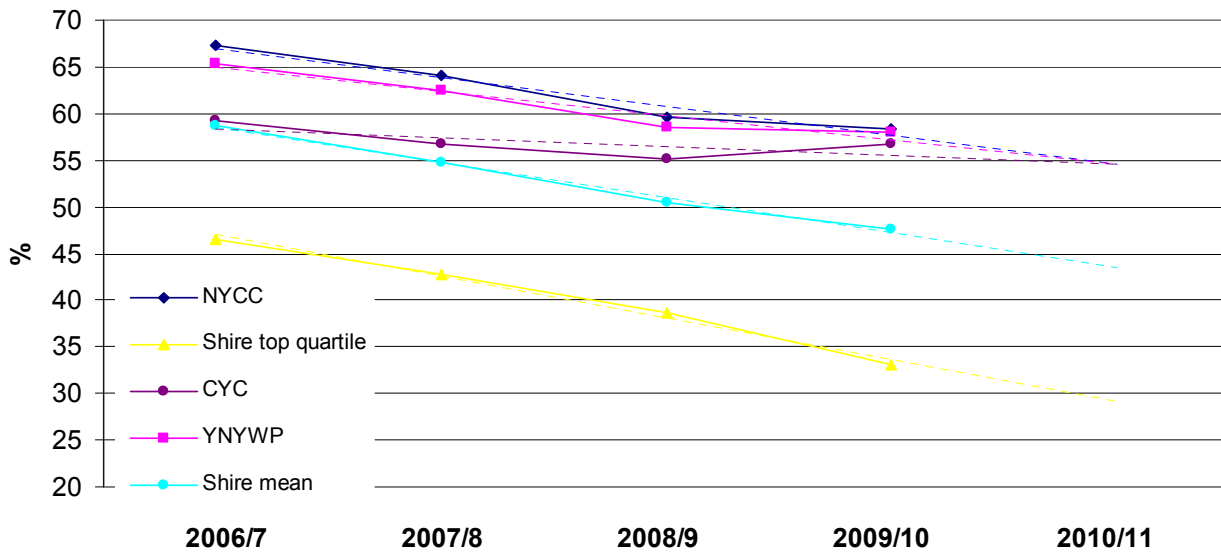
NI191 - Residual HH waste per dwelling (kg)



NI192 - % HH waste sent for reuse, recycling and composting



NI193 - % MSW to landfill



NI Waste Performance Tables (tonnages) for NYCC, CYC and YNYWP

North Yorkshire County Council (2006 -10)

NYCC									
Year	HH Collected (t)	HH sent for reuse, recycling or composting (t)	Residual (t)	No. HHs	NI 191 (kg/HH)	NI 192 (%/HH)	Total MSW collected (t)	Total MSW sent to landfill (t)	NI 193 (% MSW to landfill)
2006-07	330,712.20	116,669.90	214,042.30	266,077	804.44	35.28	389,441.93	261,825.60	67.23
2007-08	325,273.69	125,347.73	199,925.96	268,733	743.96	38.54	385,571.91	247,390.71	64.16
2008-09	312,502.58	134,868.88	177,633.70	271,127	655.17	43.16	362,708.90	216,462.43	59.68
2009-10	307,919.32	136,264.93	171,654.39	271,127	633.11	44.25	352,115.88	205,336.99	58.32

City of York Council (2006 -10)

CYC								
HH Collected (t)	HH sent for reuse, recycling or composting (t)	Residual (t)	No. HHs	NI 191 (kg/HH)	NI 192 (%/HH)	Total MSW collected (t)	Total MSW sent to landfill (t)	NI 193 (%) MSW to landfill)
101,105.87	40,268.40	60,837.47	83,597	727.75	39.83	122,376.82	72,607.47	59.33
98,829.10	43,089.24	55,739.86	83,983	663.70	43.60	118,602.37	67,234.50	56.69
96,721.84	43,651.75	53,070.09	84,383	628.92	45.13	113,782.33	62,740.19	55.14
91,725.97	39,677.92	52,048.05	84,383	616.81	43.26	106,288.76	60,295.72	56.73

York & North Yorkshire Waste Partnership (2006 -10)

YNYWP								
HH Collected (t)	HH sent for reuse, recycling or composting (t)	Residual (t)	No. HHs	NI 191 (kg/HH)	NI 192 (%/HH)	Total MSW collected (t)	Total MSW sent to landfill (t)	NI 193 (%) MSW to landfill)
431,818	156,938.30	274,879.77	349,674	786.10	36.34	511,818.75	334,433.07	65.34
424,103	168,436.97	255,665.82	352,716	724.85	39.72	504,174.28	314,625.21	62.40
409,224	178,520.63	230,703.79	355,510	648.94	43.62	476,491.23	279,202.62	58.60
399,645	175,942.85	223,702.44	355,510	629.24	44.02	458,404.64	265,632.71	57.95

HH = household

t = tonnes

MSW = Municipal Solid Waste